

Carib-Cruise-Cozumel, Mexico

This is a satellite view of the city of Cozumel (gray area) on the west side of the island of Cozumel. There is an airport in the upper right. There are three piers (bent lines) at the shore for the cruise ships. Ours was at the lower left. All of our walking was in the lower left corner of this view; we did not go into the city. We had two excursions planned. But the timing of the first was changed to an hour later. The timing of the second was changed to an hour earlier. That caused an overlap, and the second excursion, to visit a Mayan ruins area, had to be cancelled. The later timing of the first excursion, in a submarine ride to see the coral reef, was better for us, giving a brighter sun to penetrate the water that gets darker with depth.



Gail and our ship, the Silhouette



Sunrise, viewed from ship

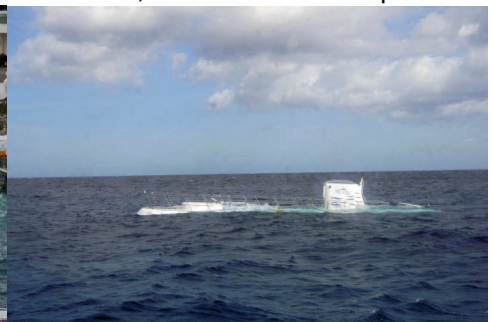


The harbor, viewed from the ship

The submarine and its support ships are not allowed to drop anchors at the coral reef, to prevent damage. So they must move or drift.



The submarine, being prepared for day



Submarine rising from an earlier dive



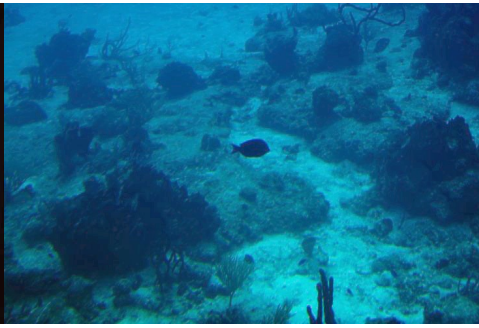
Each submarine passenger had their own viewing port. There were 47 of us.



Submarine and support ship. Our boat with passengers was not photographed.



Seaweed and bottom of support ship



Some areas had much coral and types



The light areas are coral sand



The center line is the tail of a stingray



This is the edge of the cliff



Vertical things waving in current



Fish dining on coral



Coral variety



Sponges rolling on coral sand

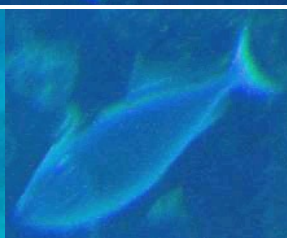


Another stingray partly hidden in coral sand



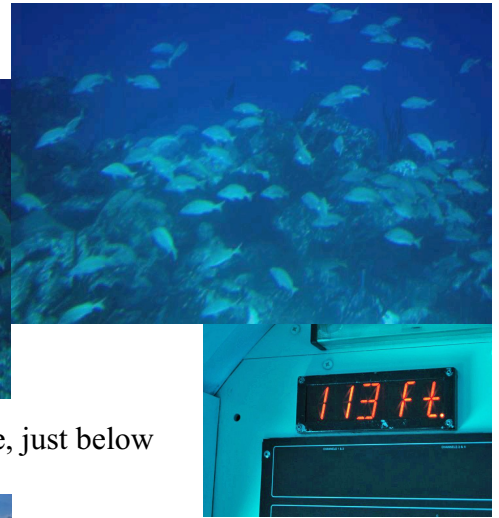
Old ship as fish habitat

Various fish:





These striped fish liked swimming beside the submarine when it was in shallow water. There were also schools of fish.



We reached a depth of 35 meters below the surface, just below what was indicated on this display.



We climbed out of both ends of the submarine and got into the passenger boat to go back to the shore. Another group of tourists then went into the submarine. We are well pleased with this choice of an excursion.

In the afternoon I walked along a 1.7 km long street away from the shore to look at and photograph birds. My only other photos were of this cemetery. Families erected small buildings above ground for the remains of their dead relatives.



Black Vulture



Female Indigo Bunting



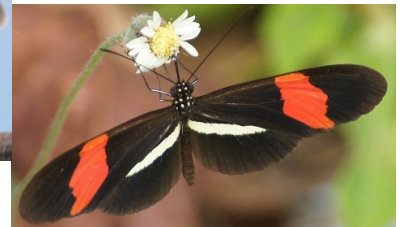
Male Indigo Bunting →
in winter colors



Tropical Kingbird



Tropical Pewee



Butterfly