

Hospital Visits

Our visit to Liberia in late March, 1970, included visits to two hospitals arranged by our hosts, the Lemmerman family, who were Lutheran missionaries based in Salayie. The hospitals were in Phebe and Zorzor, as indicated on the map.



We joined Easter Sunday worship in Salayie



The Lutheran church in Zorzor

The Curran Lutheran Hospital is located on the left side of this 2018 Google Earth satellite image, beside the village of Zorzor.



The lower right photos are of a leper village at Zorzor. I shook hands



A bamboo grove, Zorzor

with what was left of the leper's hands. He was pleased with being cured, apart from the permanent injuries.





Living quarters at Zorzor

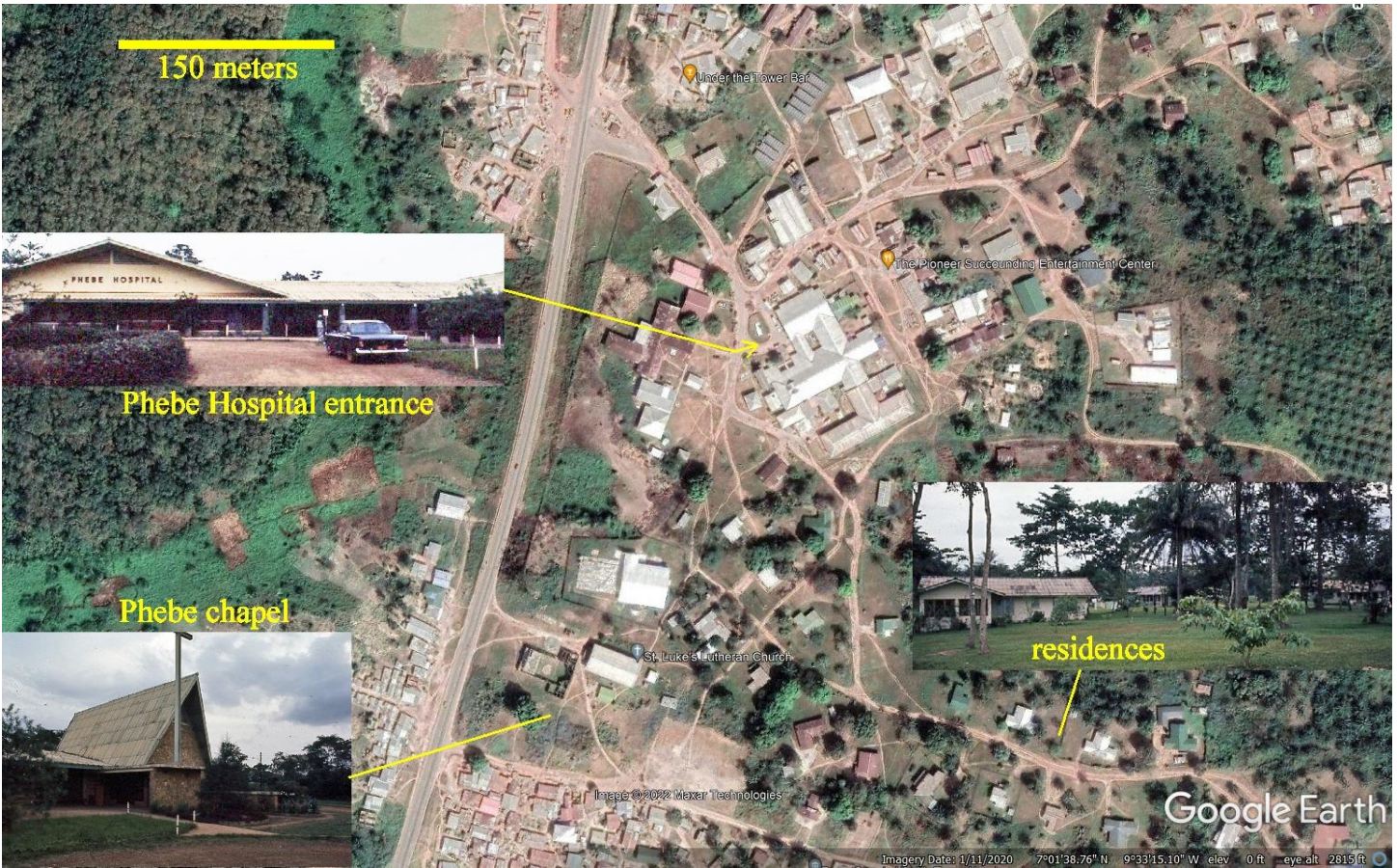


Pilot, doctor, nurse, Pastor Swedberg



Esther Bacon (middle, facing) in ward

Two years later Esther Bacon died from Lassa Fever from an accidental needle prick.



This is a satellite view from 2020 and Google Earth, with inserts of my photos from 1970. The entrance was easily identified. The chapel location is a guess. The Google label says St. Luke's Lutheran Church with the bright roof. The adjacent vacant walls might be the chapel remains. The sample residence image matches the building designs in the lower right, but not their alignments. I took many photos related to Phebe Hospital.



Operating room



Operation in progress



Checking a leg tumor



Nurse's station at + intersection of halls



Father with son in traction

GROUP	CLINIC FEES		
	A	B	C
ADULTS	\$ 1.50	\$ 3.00	\$ 5.00
CHILDREN	\$.75	\$ 3.00	\$ 5.00
NO CHARGE FOR ROUTINE LAB.			
EMERGENCY FEES			
ALL PATIENTS	\$ 3.00	\$ 8.00	\$ 16.00

1970 fees in U.S. dollars before inflation

Support facilities are very important.



Lab



Medicines



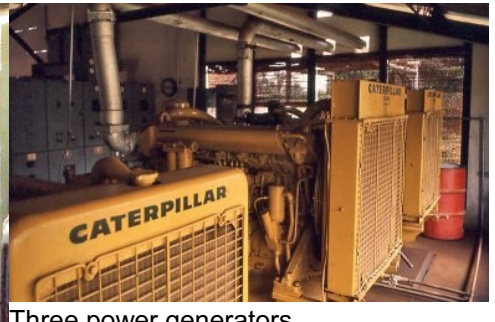
Supplies in warehouse



Kitchen



Laundry



Three power generators



Mrs. & Mr. Fred Thode at Phebe



Fred in his office, taking care of hospital

Missionaries can be "ordinary" people like Fred, who are needed to support the rest of the ministry.

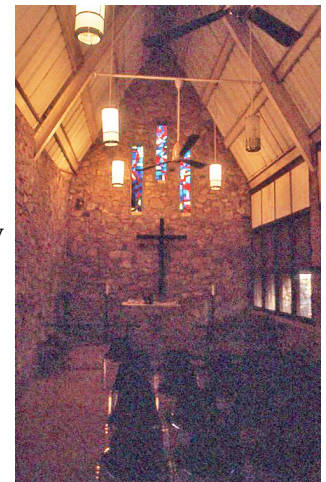


Clouds above thatched roofs



Departing aerial view

prepared by Dr. Ed Holroyd, in 2022, fifty-two years after the visit to Liberia



Phebe Chapel interior